



ADG-320D and ADG-330D Service Procedures

Dual Control Microprocessor (DMC)
Controls

**Direct Spark Ignition (DSI) Heat
115 / 208 / 230 Volt, Single Phase**

042790
Rev. 080791

ADC Part No. 450110

Retain This Manual In A Safe Place For Future Reference

American Dryer Corporation products embody advanced concepts in engineering, design, and safety. If this product is properly maintained, it will provide many years of safe, efficient, and trouble-free operation.

ONLY properly licensed technicians should service this equipment.

Observe all safety precautions displayed on the equipment or specified in the installation/ operator's manual included with the dryer.

Under **NO circumstances should the dryer door switch or the heat circuit devices ever be disabled.**

We have tried to make this manual as complete as possible and hope you will find it useful. ADC reserves the right to make changes from time to time, without notice or obligation, in prices, specifications, colors, and materials and to change or discontinue models.

Important

For your convenience, log the following information:

DATE OF PURCHASE _____ MODEL NO. _____

DISTRIBUTOR'S NAME _____

Serial No.(s) _____

Replacement parts can be ordered from your distributor or the ADC factory. When ordering replacement parts from the factory, you can fax your order to ADC at (508) 678-9447 or telephone your orders directly to the ADC Parts Department at (508) 678-9010. Please specify the dryer **model number** and **serial number** in addition to the **description** and **part number**, so that your order is processed accurately and promptly.

The illustrations on the following pages may not depict your particular dryer exactly. The illustrations are a composite of the various dryer models. Be sure to check the descriptions of the parts thoroughly before ordering.

INSTRUCTIONS TO BE FOLLOWED IN THE EVENT THE USER
SMELLS GAS MUST BE POSTED IN A PROMINENT LOCATION. THE
INSTRUCTIONS TO BE POSTED SHALL BE OBTAINED FROM THE
LOCAL GAS SUPPLIER.

IMPORTANT

YOU MUST DISCONNECT and LOCKOUT THE ELECTRIC SUPPLY and THE GAS SUPPLY BEFORE ANY COVERS or GUARDS ARE REMOVED FROM THE MACHINE TO ALLOW ACCESS FOR CLEANING, ADJUSTING, INSTALLATION, or TESTING OF ANY EQUIPMENT per OSHA (Occupational Safety and Health Administration) STANDARDS.

FOR YOUR SAFETY

DO NOT STORE OR USE GASOLINE OR OTHER FLAMMABLE VAPORS AND LIQUIDS IN THE VICINITY OF THIS OR ANY OTHER APPLIANCE.

DO NOT DRY MOP HEADS IN THE DRYER.

DO NOT USE DRYER IN THE PRESENCE OF DRY CLEANING FUMES.

WARNING

CHILDREN SHOULD NOT BE ALLOWED TO PLAY ON OR IN THE DRYER(S).

CHILDREN SHOULD BE SUPERVISED IF NEAR DRYER(S) IN OPERATION.

CAUTION

DRYER(S) SHOULD NEVER BE LEFT UNATTENDED WHILE IN OPERATION.

IMPORTANT

Please observe all safety precautions displayed on the equipment and/or specified in the installation/operators manual included with the dryer.

Dryer(s) must not be installed or stored in an area where it will be exposed to water and/or weather.

The wiring diagram for the dryer is located in the front electrical control box area.

Table Of Contents

A. TO REMOVE LINT DRAW	3
B. TO REMOVE CONTROL (Middle) OR LINT (Lower) DOOR	3
C. TO REMOVE GAS VALVE TRAIN ASSEMBLY	4
D. TO REMOVE CONTROL BOX	5
E. TO REMOVE FRONT PANEL	6
F. TO REMOVE/REPLACE LINT DRAWER SWITCH ASSEMBLY OR THE SWITCH ITSELF	7
G. TO REMOVE/REPLACE SENSOR BRACKET AND/OR ITS COMPONENTS	8
H. TO REMOVE/REPLACE BELT	9
I. TO REMOVE/REPLACE MOTOR	10
J. TO REMOVE/REPLACE IMPELLOR (Fan)	13
K. BELT/IDLER TENSION ADJUSTMENT	16
L. TO REMOVE DUAL CONTROL MICROPROCESSOR (DMC) COMPUTER PANEL ASSEMBLY	16
M. TO REPLACE DUAL CONTROL MICROPROCESSOR (DMC) COMPUTER	17
N. TO REPLACE TOUCHPAD (Keypad)	19
O. TO REPLACE COIN ACCEPTOR	20
P. TO REPLACE EITHER SOLID STATE RELAY BOARD	21
Q. BASKET (Tumbler) ALIGNMENT - VERTICAL	22
R. BASKET (Tumbler) ALIGNMENT - LATERAL	23
S. TO REPLACE BASKET (Tumbler) AND/OR BASKET (Tumbler) SUPPORT	25
T. TO REPLACE BASKET (Tumbler) SUPPORT PILLOW BLOCK BEARING	27

U. TO REPLACE BASKET (Tumbler) SUPPORT FLANGE BEARING	28
V. TO REPLACE 330° (Burner) HI-LIMIT SWITCH (Thermostat)	30
W. TO REPLACE SAIL SWITCH	30
X. TO REPLACE MAIN DOOR SWITCH(ES)	31
Y. TO REPLACE DIRECT SPARK IGNITION (DSI) MODULE	33
Z. TO REPLACE IGNITOR/PROBE ASSEMBLY	34
AA. TO REPLACE GAS VALVE	35
BB. TO CONVERT DRYER FROM NATURAL GAS TO LIQUID PROPANE (L.P.) GAS	37
CC. TO REPLACE COIN VAULT	39
DD. TO REMOVE MAIN DOOR	40
EE. TO INSTALL NEW MAIN DOOR GLASS	40
FF. TO INSTALL NEW MAIN DOOR GASKET	41
GG. TO REPLACE MAIN DOOR HINGE	42

A. TO REMOVE LINT DRAWER

1. PULL OUT LINT DRAWER 3/4's OF THE WAY (approximately twenty [20] inches).
2. REACH UP INTO THE BACK OF THE LINT DRAWER AND PULL DOWN THE RETAINER (hinge) THAT IS ATTACHED TO THE TOP OF THE LINT DRAWER.
3. THE LINT DRAWER CAN NOW BE REMOVED.
4. REVERSE PROCEDURE FOR REINSTALLING THE LINT DRAWER.

B. TO REMOVE CONTROL (Middle) OR LINT (Lower) DOOR

1. PULL OUT LINT DRAWER 3/4's OF THE WAY (approximately twenty [20] inches). REACH INTO THE BACK OF THE LINT DRAWER AND PUSH DOWN THE RETAINER (hinge) THAT IS ATTACHED TO THE TOP OF THE LINT DRAWER.
2. PULL OUT THE LINT DRAWER.
3. OPEN THE CONTROL/LINT DOOR - TWO (2) 1/4 TURN LOCKS, ONE (1) ON EACH SIDE.
4. REMOVE THE CONTROL/LINT DOOR.
5. REVERSE PROCEDURE FOR REINSTALLING THE CONTROL/LINT DOOR.

C. TO REMOVE GAS VALVE TRAIN ASSEMBLY

1. DISCONTINUE POWER TO THE DRYER.
2. CLOSE ALL GAS SHUT-OFF VALVES IN THE GAS SUPPLY LINE TO THE DRYER.
3. REMOVE THE LINT DRAWER and THE CONTROL/LINT DOOR FROM THE DRYER (follow Lint Drawer and Control/Lint Door removal procedures in SECTION A and SECTION B on page 3).
4. CLOSE THE UNION SHUT-OFF VALVE AT INLET AREA OF THE GAS VALVE.
5. LOOSEN THE UNION SHUT-OFF VALVE COLLAR NUT ALL THE WAY.
6. PULL OUT GAS VALVE TRAIN ASSEMBLY 1/4 OF THE WAY. DISCONNECT THE GAS VALVE HARNESS POWER CONNECTOR AT THE TOP OF THE ASSEMBLY.
7. GENTLY PULL/REMOVE THE GAS VALVE TRAIN ASSEMBLY.

IMPORTANT: WHEN REMOVING THE GAS VALVE TRAIN ASSEMBLY, BE CAREFUL NOT TO SNAG OR DAMAGE THE GAS VALVE TRAIN WIRING DISCONNECTED IN STEP 6.

8. REVERSE PROCEDURE FOR REINSTALLING THE GAS VALVE TRAIN ASSEMBLY.

NOTE: BE SURE TO OPEN ALL GAS SHUT-OFF VALVES CLOSED PRIOR TO REMOVING THE GAS VALVE TRAIN ASSEMBLY.

9. REESTABLISH POWER TO THE DRYER.

D. TO REMOVE CONTROL BOX

1. DISCONTINUE POWER TO THE DRYER.
2. REMOVE THE LINT DRAWER and THE CONTROL DOOR FROM THE DRYER (follow Lint Drawer and Control/Lint Door removal procedures in **SECTION A** and **SECTION B** on **page 3**)
3. REMOVE SCREW LOCATED ON THE BOTTOM RIGHT HAND CORNER OF THE CONTROL PANEL.
4. SLIDE OUT THE CONTROL BOX and HANG THE CONTROL BOX ASSEMBLY ON HINGES LOCATED ON THE RIGHT SIDE PANEL, AND DISCONNECT THE THREE (3) WIRING HARNESSSES (connectors) AT THE BACK OF THE CONTROL BOX.
5. THE CONTROL BOX MAY NOW BE TAKEN OUT OF THE DRYER COMPLETELY, OR, DEPENDING ON THE SERVICE FUNCTION TO BE PERFORMED, THE BOX CAN BE ATTACHED TO THE TWO (2) FEMALE HINGES ON THE RIGHT SIDE OF THE DRYER CABINET.

NOTE: IF THE CONTROL BOX IS ATTACHED TO THE DRYER CABINET, THE THREE (3) WIRING HARNESSSES MENTIONED IN **STEP 4** DO NOT NEED TO BE DISCONNECTED.

6. REVERSE PROCEDURE FOR REINSTALLING THE CONTROL BOX ASSEMBLY.
7. REESTABLISH POWER TO THE DRYER.

E. TO REMOVE FRONT PANEL

1. DISCONTINUE POWER TO THE DRYER.
2. REMOVE THE CONTROL BOX ASSEMBLY (follow Control Box removal procedure in **SECTION D** on **page 5**).
3. IF THE BOTTOM FRONT PANEL IS BEING REMOVED, THE LOWER LINT DOOR **MUST ALSO BE REMOVED**.
4. DISCONNECT THE DOOR SWITCH CONNECTOR FROM THE LINT DRAWER SWITCH BOX ASSEMBLY LOCATED UNDER THE BASKET (tumbler) ON THE RIGHT SIDE.

NOTE: THERE ARE TWO (2) HARNESSSES THAT CONNECT TO LINT DRAWER SWITCH BOX. LOCATE AND DISCONNECT THE ONE THAT LEADS TO THE FRONT PANEL.

5. PULL UP THE TWO (2) METAL FINGERS WHERE THE DOOR SWITCH HARNESS IS SECURED TO THE FRAME AND RIGHT SIDE PANEL OF THE DRYER.
6. REMOVE ALL NINE (9) SCREWS FROM THE FRONT PANEL. THERE ARE FOUR (4) ON THE LEFT SIDE, FOUR (4) ON THE RIGHT SIDE, AND ONE (1) UNDERNEATH THE MAIN DOOR.
7. GENTLY REMOVE THE FRONT PANEL ASSEMBLY FROM DRYER.
8. REVERSE PROCEDURE FOR REINSTALLING THE FRONT PANEL ASSEMBLY.
9. REESTABLISH POWER TO THE DRYER.

F. TO REMOVE/REPLACE LINT DRAWER SWITCH ASSEMBLY OR THE SWITCH ITSELF

1. DISCONTINUE POWER TO THE DRYER.
2. REMOVE THE LINT DRAWER and THE CONTROL/LINT DOOR FROM THE DRYER (follow Lint Drawer and Control/Lint Door removal procedures in SECTION A and SECTION B on **page 3**).
3. IF TOP BASKET (tumbler) IS BEING SERVICED, REMOVE THE CONTROL BOX ASSEMBLY (follow Control Box removal procedure in SECTION D on **page 5**).
4. TO REMOVE THE LINT DRAWER SWITCH BOX ASSEMBLY, REMOVE THE TWO (2) SCREWS INSIDE THE LINT DRAWER AREA THAT SECURE BOX TO THE FRAME OF THE DRYER.
5. DISASSEMBLE LINT DRAWER BOX ASSEMBLY FROM THE DRYER BY DISCONNECTING THE TWO (2) HARNESS CONNECTORS FROM THE BOX ASSEMBLY.
6. TO REMOVE THE SWITCH FROM THE ASSEMBLY, REMOVE THE TWO (2) PHILLIPS HEAD SCREWS FROM THE BACK OF THE BOX.
7. DISASSEMBLE THE SWITCH FROM THE BOX BY REMOVING THE TWO (2) SLOTTED HEAD SCREWS SECURING SWITCH TO BOX.
8. REVERSE PROCEDURE FOR REINSTALLING THE LINT DRAWER SWITCH ASSEMBLY.
9. REESTABLISH POWER TO THE DRYER.

G. TO REMOVE/REPLACE SENSOR BRACKET AND/OR ITS COMPONENTS

1. DISCONTINUE POWER TO THE DRYER.
2. REMOVE THE LINT DRAWER and THE CONTROL/LINT DOOR FROM THE DRYER (follow Lint Drawer and Control/Lint Door removal procedures in SECTION A and SECTION B on page 3).
3. REMOVE THE TWO (2) SCREWS SECURING THE FRONT OF THE SENSOR BRACKET. PIVOT BRACKET DOWNWARD AND ASSEMBLY WILL SEPARATE FROM THE SENSOR BRACKET HOLDER.
4. TO DISASSEMBLE BRACKET ASSEMBLY FROM DRYER, DISCONNECT THE TWO (2) HARNESS CONNECTORS.
5. TO REMOVE THE TEMPERATURE SENSOR AND THE CONNECTING HARNESS WITH ITS CONNECTORS:
 - A. DISASSEMBLE MICROPROCESSOR SENSOR PROBE FROM THE BRACKET BY REMOVING THE 1/4" PUSH-ON FASTENER FROM THE OUTSIDE OF THE BRACKET.
 - B. REMOVE HARNESS CONNECTORS BY SQUEEZING SIDES AND PUSHING TOWARDS THE CENTER OF THE BRACKET.
 - C. DISCONNECT THE TWO (2) WIRES FROM THE 170° THERMOSTAT.
 - D. REVERSE PROCEDURE FOR INSTALLING NEW SENSOR PROBE ASSEMBLY.
6. TO REPLACE THE 170° THERMOSTAT:
 - A. REMOVE THE TWO (2) SLOTTED HEAD SCREWS SECURING THE 170° THERMOSTAT TO BRACKET ASSEMBLY.

B. REVERSE PROCEDURE FOR INSTALLING NEW 170° THERMOSTAT.

7. REVERSE PROCEDURE FOR REINSTALLING THE SENSOR BRACKET.

IMPORTANT: WHEN REINSTALLING THE SENSOR BRACKET ASSEMBLY TO THE DRYER, BE SURE THE INTERNAL WIRES DO NOT GET PINCHED BETWEEN THE SENSOR BRACKET and THE HOLDER.

8. REESTABLISH POWER TO THE DRYER.

H. TO REMOVE/REPLACE BELT

1. DISCONTINUE POWER TO THE DRYER.
2. REMOVE THE LINT DRAWER and THE CONTROL/LINT DOOR FROM THE DRYER (follow Lint Drawer and Control/Lint Door removal procedures in **SECTION A** and **SECTION B** on **page 3**).
3. IF TOP BASKET (tumbler) IS BEING SERVICED, REMOVE CONTROL BOX ASSEMBLY (follow Control Box removal procedure in **SECTION D** on **page 5**).
4. REMOVE FRONT PANEL FROM BASKET (tumbler) BEING SERVICED (follow Front Panel Removal procedure in **SECTION E** on **page 6**).
5. LOOSEN THE TENSION ON THE IDLER ARM ADJUSTING SPRING BY LOOSENING THE TWO (2) 9/16" NUTS ON THE SPADE BOLT.
6. SLIDE BELT OFF THE IDLER BRACKET and MOTOR SHAFT.
7. PUSH BELT UP INTO BASKET (tumbler) AREA THROUGH THE HOLE IN THE WRAPPER.

8. REMOVE THE BELT BY MANEUVERING IT BACK and FORTH AND SLIDING IT FORWARD WITH YOUR HANDS UP THROUGH THE LINT DRAWER AREA.
9. THE BELT WILL COME OUT FROM THE FRONT OF THE DRYER BETWEEN THE BASKET (tumbler) AND THE WRAPPER.
10. REVERSE PROCEDURE FOR INSTALLING BELT.

IMPORTANT: BE SURE TO SET THE PROPER BELT TENSION AT IDLER ADJUSTMENT (follow Belt/Idler Tension Adjustment procedure in **SECTION K** on **page 16**).

11. REESTABLISH POWER TO THE DRYER.

I. TO REMOVE/REPLACE MOTOR

1. DISCONTINUE POWER TO THE DRYER.
2. REMOVE THE LINT DRAWER and THE CONTROL/LINT DOOR FROM THE DRYER (follow Lint Drawer and Control/Lint Door removal procedures in **SECTION A** and **SECTION B** on **page 3**).
3. IF TOP BASKET (tumbler) IS BEING SERVICED, REMOVE THE CONTROL BOX FROM THE DRYER (follow Control Box removal procedure in **SECTION D** on **page 5**).
4. REMOVE THE TWO (2) 9/16" (O.D.) NUTS THAT ARE ON THE IDLER TENSION SPADE BOLT.
5. REMOVE THE BELT FROM THE IDLER BRACKET and THE MOTOR SHAFT.
6. REMOVE THE IDLER BRACKET, ONE (1) 1/2" (O.D.) BOLT IN THE FRONT and THE TWO (2) 1/2" (O.D.) BOLTS ON THE RIGHT SIDE OF THE BRACKET.

7. LOOSEN THE FOUR (4) 1/2" (O.D.) BOLTS THAT HOLD THE MOTOR MOUNT TO THE MACHINE. TWO (2) OF THESE BOLTS ARE AT THE LEFT INSIDE OF THE MOTOR MOUNT ASSEMBLY, THE OTHER TWO (2) ARE ON THE OUTER RIGHT HAND SIDE.

| IMPORTANT: DO NOT REMOVE THESE FOUR (4) BOLTS.

8. REMOVE THE LOWER HALF OF THE REAR SPLIT BACK GUARD PANEL TO EITHER THE TOP OR THE BOTTOM BASKET (tumbler), DEPENDING ON WHICH BASKET (tumbler) IS BEING SERVICED.

9. REMOVE THE FOUR (4) 7/16" (O.D.) NUTS WHICH SECURE THE IMPELLOR (fan) HOUSING COVER TO THE BLOWER HOUSING.

10. REMOVE THE TWO (2) 7/16" (O.D.) NUTS and LOCK WASHERS WHICH SECURE THE IMPELLOR (fan)/SHAFT BEARING TO THE IMPELLOR (fan) HOUSING COVER.

11. LOOSEN THE TWO (2) SET SCREWS ON THE IMPELLOR (fan)/SHAFT BEARING.

12. REMOVE THE IMPELLOR (fan)/SHAFT BEARING FROM THE SHAFT. TO DO SO, WEDGE A SLOTTED SCREWDRIVER BLADE BETWEEN THE BEARING AND IMPELLOR (fan) COVER AND WALK BEARING BACK OFF SHAFT. THE IMPELLOR (fan) COVER WILL NOW SEPARATE FROM THE BLOWER (impellor/fan) HOUSING.

13. REMOVE IMPELLOR (fan) LOCK NUT (right hand) AND LOCK WASHER SECURING IMPELLOR (fan) TO MOTOR SHAFT. THIS CAN BE DONE BY TURNING THE LOCK NUT TO THE LEFT WITH AN ADJUSTABLE WRENCH, OR MORE ADVISABLE, WITH A 1-1/8" DEEP SOCKET RATCHET WRENCH IN AN EFFORT TO AVOID DAMAGING THE LOCK NUT.

14. ALIGN IMPELLOR (fan) TO THE CENTER OF THE BLOWER HOUSING HOLE and REMOVE IMPELLOR (fan) BY GRASPING FAN WITH BOTH HANDS AND PULLING OUTWARD. THE KEY WILL ALSO COME OFF OF THE MOTOR SHAFT IN THIS PROCEDURE.

15. RETURN TO THE FRONT OF THE DRYER and DISCONNECT THE WIRING HARNESS FROM THE MOTOR.
16. DISASSEMBLE THE MOTOR FROM THE MOTOR MOUNT BY REMOVING THE FOUR (4) 1/2" (O.D.) BOLTS (loosened in STEP 7) SECURING THE MOTOR TO THE MOTOR MOUNT. REMOVE THE MOTOR THROUGH THE FRONT OF THE DRYER. REVERSE THIS PROCEDURE FOR INSTALLING THE NEW MOTOR.
17. RECONNECT THE WIRING HARNESS DISCONNECTED FROM THE MOTOR IN STEP 15.
18. INSERT KEY INTO THE MOTOR SHAFT REMOVED IN STEP 14, LINE UP KEYWAY IN IMPELLOR (fan) WITH THE KEY IN THE SHAFT AND SLIDE IMPELLOR (fan) ALL THE WAY ONTO SHAFT.
19. REINSTALL THE LOCK WASHER and LOCK NUT (right hand) REMOVED IN STEP 13 AND TIGHTEN SECURELY.
20. REASSEMBLE THE IMPELLOR (fan) COVER (4 nuts) REMOVED IN STEP 9. ASSEMBLE IMPELLOR/SHAFT BEARING AND SECURE (hand tighten only) WITH THE TWO (2) NUTS REMOVED IN STEP 10. SECURE THE TWO (2) SET SCREWS ON THE IMPELLOR (fan)/SHAFT BEARING. BE SURE THAT THESE SET SCREWS ARE TIGHTLY IN PLACE.
21. THE IMPELLOR (fan) MUST NOW BE ADJUSTED/CENTERED IN THE BLOWER HOUSING. ALIGN THE CENTER OF THE MOTOR SHAFT (at impellor [fan]/shaft bearing) SO THAT THE CENTER OF THE MOTOR SHAFT IS EXACTLY EIGHT (8) INCHES FROM THE LEFT SIDE PANEL.
 - A. ONCE THE IMPELLOR (fan) IS PROPERLY CENTERED TIGHTEN THE TWO (2) NUTS OF THE IMPELLOR/SHAFT BEARING THAT WERE HAND TIGHTENED IN STEP 20.

IMPORTANT: FAILURE TO HAVE THE IMPELLOR (fan) PROPERLY ALIGNED CAN RESULT IN THE IMPELLOR (fan) BEING DAMAGED.

22. REINSTALL THE LOWER HALF OF THE REAR SPLIT BACK GUARD PANEL REMOVED IN STEP 8.
23. THE MOTOR MUST NOW BE ALIGNED and SECURED IN PLACE. TO DO SO, POSITION THE MOTOR SO THAT THERE IS EXACTLY EIGHT (8) INCHES FROM THE CENTER OF THE MOTOR SHAFT BUSHING (phillips head screw securing the bushing to motor shaft) TO THE RIGHT SIDE PANEL AND TIGHTEN THE FOUR (4) BOLTS (loosened in STEP 7) WHICH SECURES THE MOTOR MOUNT TO THE DRYER.
24. REASSEMBLE IDLER BRACKET and HARDWARE REMOVED IN STEP 6. ASSEMBLE THE TWO (2) 9/16" (O.D.) NUTS ON TO THE IDLER TENSION SPADE BOLT REMOVED IN STEP 4. DO NOT TIGHTEN THESE TWO (2) 9/16" NUTS AT THIS TIME.
25. RECONNECT DRIVE BELT AND THEN MAKE NECESSARY BELT TENSION ADJUSTMENT (follow Belt/Idler Tension Adjustment procedure in SECTION K on page 16).
26. REVERSE STEPS 3 through 1.

I. TO REMOVE/REPLACE IMPELLOR (Fan)

1. DISCONTINUE POWER TO THE DRYER.
2. REMOVE THE LINT DRAWER, THE CONTROL/LINT DOOR and THE CONTROL BOX FROM THE DRYER (follow Control Box removal procedure in SECTION D on page 5).

NOTE: IF LOWER BASKET (tumbler) IS BEING SERVICED, THE CONTROL BOX DOES NOT HAVE TO BE REMOVED.

3. LOOSEN (do not remove) THE FOUR (4) 1/2" (O.D.) BOLTS THAT HOLD THE MOTOR MOUNT TO THE DRYER CABINET. TWO (2) OF THESE BOLTS ARE AT THE LEFT INSIDE OF THE MOTOR MOUNT ASSEMBLY, AND TWO (2) ARE ON THE OUTER RIGHT HAND SIDE.
4. REMOVE THE LOWER HALF OF THE REAR SPLIT BACK GUARD PANEL TO EITHER THE TOP OR THE BOTTOM BASKET (tumbler), DEPENDING ON WHICH BASKET (tumbler) IS BEING SERVICED.
5. REMOVE THE FOUR (4) 7/16" (O.D.) NUTS WHICH SECURE THE IMPELLOR (fan) HOUSING COVER TO THE BLOWER HOUSING.
6. REMOVE THE TWO (2) 7/16" (O.D.) NUTS and LOCK WASHERS WHICH SECURE THE IMPELLOR (fan)/SHAFT BEARING TO THE IMPELLOR (fan) HOUSING.
7. LOOSEN THE TWO (2) SET SCREWS ON THE IMPELLOR (fan) /SHAFT BEARING.
8. REMOVE THE IMPELLOR (fan)/SHAFT BEARING FROM THE SHAFT. TO DO SO, WEDGE A SLOTTED SCREWDRIVER BLADE BETWEEN THE BEARING IMPELLOR (fan) COVER and WALK BEARING BACK OFF OF THE SHAFT. THE IMPELLOR (fan) COVER WILL ALSO NOW SEPARATE FROM BLOWER (fan) HOUSING.
9. REMOVE IMPELLOR LOCK NUT (right hand) AND LOCK WASHER SECURING THE IMPELLOR (fan) TO THE MOTOR SHAFT. THIS CAN BE DONE BY TURNING THE LOCK NUT TO THE LEFT WITH AN ADJUSTABLE WRENCH, OR MORE ADVISABLE, WITH A 1-1/8" DEEP SOCKET RATCHET WRENCH IN AN EFFORT TO AVOID DAMAGING THE LOCK NUT.
10. ALIGN IMPELLOR (fan) TO THE CENTER OF THE BLOWER HOUSING HOLE AND REMOVE IMPELLOR (fan) BY GRASPING FAN WITH BOTH HANDS AND PULLING OUTWARD. THE KEY WILL ALSO COME OFF MOTOR SHAFT IN THE PROCEDURE.
11. TO INSTALL IMPELLOR (fan)...INSERT KEY INTO MOTOR SHAFT REMOVED IN STEP 10. LINE UP KEY WAY IN IMPELLOR (fan) WITH KEY IN THE SHAFT AND SLIDE IMPELLOR (fan) ALL THE WAY ONTO SHAFT.

12. REINSTALL THE LOCK WASHER and LOCK NUT REMOVED IN STEP 9 AND TIGHTEN SECURELY.
 13. REASSEMBLE THE IMPELLOR (fan) COVER WITH THE FOUR (4) NUTS REMOVED IN STEP 5. ASSEMBLE IMPELLOR (fan)/SHAFT BEARING AND SECURE (hand tighten only) WITH THE TWO (2) NUTS REMOVED IN STEP 6. SECURE THE TWO (2) SET SCREWS ON THE IMPELLOR (fan)/SHAFT BEARING. BE SURE THAT THESE TWO (2) SET SCREWS ARE TIGHTLY IN PLACE.
 14. THE IMPELLOR (fan) MUST NOW BE ADJUSTED/CENTERED IN THE BLOWER (impellor/fan) HOUSING. ALIGN THE CENTER OF THE MOTOR SHAFT (at impellor [fan]/Shaft Bearing) SO THAT THE CENTER OF THE MOTOR SHAFT IS EXACTLY EIGHT (8) INCHES FROM THE LEFT SIDE PANEL.
 - A. ONCE THE IMPELLOR (fan) IS PROPERLY CENTERED, TIGHTEN THE TWO (2) NUTS OF THE IMPELLOR (fan)/SHAFT BEARING THAT WERE HAND TIGHTENED IN STEP 13.
- IMPORTANT:** FAILURE TO HAVE IMPELLOR (fan) PROPERLY ALIGNED CAN RESULT IN THE IMPELLOR (fan) BEING DAMAGED.
15. REINSTALL THE LOWER HALF OF THE REAR SPLIT BACK GUARD PANEL REMOVED IN STEP 4.
 16. THE MOTOR MUST NOW BE REALIGNED and SECURED IN PLACE. TO DO SO, POSITION THE MOTOR SO THAT IT IS EXACTLY EIGHT (8) INCHES FROM THE CENTER OF THE MOTOR PULLEY (spline screw securing pulley to motor shaft) TO THE RIGHT SIDE PANEL. TIGHTEN THE FOUR (4) BOLTS WHICH SECURE MOTOR MOUNT TO THE DRYER WHICH WERE LOOSENED IN STEP 3.
 17. MAKE THE NECESSARY BELT/IDLER TENSION ADJUSTMENT (follow Belt/Idler Tension Adjustment procedure in SECTION K on page 16).
 18. REVERSE STEP 2 and STEP 1.

K. BELT/IDLER TENSION ADJUSTMENT

1. DISCONTINUE POWER TO THE DRYER.
2. REMOVE THE LINT DRAWER, THE CONTROL/LINT DOOR and THE CONTROL BOX ASSEMBLY FROM THE DRYER (follow Control Box removal procedure in SECTION D on page 5).

NOTE: IF LOWER BASKET (tumbler) IS BEING SERVICED, THE CONTROL BOX DOES NOT HAVE TO BE REMOVED.

3. TO ADJUST TENSION, WHILE HOLDING SPADE TENSION BOLT IN PLACE (i.e., with channel lock pliers), LOOSEN THE 9/16" (O.D.) LOCKING NUT. TO INCREASE TENSION, TURN INNER 9/16" (O.D.) NUT DOWNWARD...TO DECREASE TENSION, TURN THIS NUT UPWARD.

NOTE: APPROXIMATE PROPER BELT TENSION - WHEN THERE IS A ONE (1) INCH SPACE BETWEEN THE IDLER ADJUSTMENT BRACKET AND THE FIRST THREAD ON THE RIGHT HAND SIDE OF THE SPADE TENSION BOLT.

4. ONCE PROPER ADJUSTMENT IS ACHIEVED, SECURE THE 9/16" LOCKING NUT
5. REVERSE STEP 2 and STEP 1.

L. TO REMOVE DUAL CONTROL MICROPROCESSOR (DMC) COMPUTER PANEL ASSEMBLY

1. DISCONTINUE POWER TO THE DRYER.

2. REMOVE THE LINT DRAWER and THE CONTROL DOOR FROM THE DRYER (follow Lint Drawer and Control/Lint Door removal procedures in **SECTION A** and **SECTION B** on page 5).
3. REMOVE SCREW IN THE LOWER RIGHT HAND CORNER OF THE CONTROL PANEL SECURING THE PANEL TO THE CONTROL BOX.
4. OPEN THE CONTROL PANEL and DISCONNECT ALL THE HARNESES THAT ARE CONNECTED TO THE DUAL CONTROL MICROPROCESSOR (DMC) COMPUTER...THE TWO (2) 9-PIN WIRE HARNESS CONNECTORS AND THE 3-PIN CONNECTOR WIRING HARNESS COMING FROM THE COIN ACCEPTOR OPTIC SWITCH(ES).
5. TO REMOVE THE CONTROL PANEL ASSEMBLY FROM THE CONTROL BOX, GENTLY TAP THE BOTTOM EDGE OF THE CONTROL PANEL WHILE LIFTING PANEL UPWARD OFF HINGES.
6. REVERSE PROCEDURE FOR REINSTALLING THE CONTROL PANEL ASSEMBLY.
7. REESTABLISH POWER TO THE DRYER.

M. TO REPLACE DUAL CONTROL MICROPROCESSOR (DMC) COMPUTER

1. DISCONTINUE POWER TO THE DRYER.
2. REMOVE THE LINT DRAWER and THE CONTROL DOOR FROM THE DRYER (follow Lint Drawer and Control/Lint Door removal procedures in **SECTION A** and **SECTION B** on page 3).
3. REMOVE SCREW IN THE LOWER RIGHT HAND CORNER OF THE CONTROL PANEL SECURING PANEL TO CONTROL BOX.

4. OPEN CONTROL PANEL and DISCONNECT ALL THE HARNESSES THAT ARE CONNECTED TO THE DUAL CONTROL MICROPROCESSOR (DMC) COMPUTER...THE TWO (2) 9-PIN WIRE HARNESS CONNECTORS, THE 3-PIN CONNECTOR WIRING HARNESS COMING FROM COIN ACCEPTOR OPTIC SWITCH(ES), AND THE ONE (1) 4-PIN POWER WIRE HARNESS CONNECTOR.

NOTE: THESE CONNECTORS CAN BE REMOVED FROM THE DMC CONTROLLER (computer) BY SQUEEZING THE SIDE TABS WHILE PULLING THE CONNECTOR OUTWARD.

5. DEPENDING ON THE SERVICE FUNCTION TO BE PERFORMED, THE CONTROL PANEL ASSEMBLY CAN BE LEFT ON THE CONTROL BOX OR REMOVED ENTIRELY FROM THE DRYER. TO REMOVE THE CONTROL PANEL, FOLLOW CONTROL PANEL REMOVAL PROCEDURE (SECTION L, STEP 5, [page 17](#)).
6. DISCONNECT TOUCHPAD (KEYPAD) RIBBON CONNECTOR BY HOLDING ON TO **BLUE** RIBBON CONNECTOR AND PULLING OUTWARD.
7. REMOVE THE FOUR (4) HEX NUTS (one [1] at each corner) SECURING THE DUAL CONTROL MICROPROCESSOR (DMC) COMPUTER TO THE METAL CONTROL PANEL AND GENTLY DISASSEMBLE THE DMC CONTROLLER (computer) FROM THE PANEL.
8. INSTALL THE NEW DUAL CONTROL MICROPROCESSOR (DMC) COMPUTER BY REVERSING THE PROCEDURE IN STEP 7.

IMPORTANT: WHEN INSTALLING THE NEW DUAL CONTROL MICROPROCESSOR (DMC), MAKE SURE THAT THE TRANSFORMER ON THE DMC CONTROLLER (COMPUTER) IS LOCATED AT THE BOTTOM AREA OF THE CONTROL PANEL.

9. REVERSE STEPS 6 through 1.

NOTE: WHEN RECONNECTING THE OPTIC SWITCH HARNESS CONNECTOR, FOR SINGLE COIN ACCEPTOR MODELS, CONNECT THE HARNESS TO THE LOWER OF THE TWO(2) CONNECTORS ON THE DMC CONTROLLER (computer).

NOTE: FOR MODELS WITH THE DUAL COIN OPTION, THE LOWER DENOMINATION HARNESS CONNECTOR (Red/Green/Orange wires) ARE CONNECTED TO THE LOWER CONNECTOR ON THE DMC CONTROLLER (computer), AND THE HIGHER DENOMINATION HARNESS (black/green/orange wires) ARE CONNECTED TO THE HIGHER CONNECTOR ON DMC CONTROLLER (computer).

N. TO REPLACE TOUCHPAD (Keypad)

1. DISCONTINUE POWER TO DRYER.
2. REMOVE THE LINT DRAWER and THE CONTROL DOOR FROM THE DRYER (follow Lint Drawer and Control/Lint Drawer removal procedures in **SECTION A** and **SECTION B** on **page 3**).
3. REMOVE SCREW LOCATED IN THE BOTTOM RIGHT HAND CORNER OF THE CONTROL PANEL.
4. OPEN THE CONTROL PANEL and DISCONNECT TOUCHPAD (keypad) RIBBON CONNECTOR FROM THE DMC CONTROLLER (computer) BY HOLDING ON TO THE **BLUE** RIBBON CONNECTOR AND PULLING OUTWARD.
5. REMOVE THE "U" SHAPED COIN REJECT/RETURN HOLDER LOCATED ON THE BOTTOM OF THE TOUCHPAD (keypad) BY REMOVING THE TWO (2) HEX NUTS (with a 1/4" nut driver) AT THE BACK SIDE OF CONTROL PANEL SECURING THE "U" COIN REJECT/RETURN HOLDER TO PANEL.
6. PEEL THE TOUCHPAD (keypad) OFF OF THE PANEL. THE RIBBON CABLE/CONNECTOR WILL COME OUT THROUGH THE SLOT IN THE CONTROL PANEL.

7. TO REPLACE THE TOUCHPAD (keypad), PEEL THE PAPER BACKING OFF THE NEW TOUCHPAD (keypad). PUT THE RIBBON CABLE/CONNECTOR THROUGH THE SLOT IN THE CONTROL PANEL. HOLDING THE NEW TOUCHPAD (keypad) CLOSE TO THE PANEL, ALIGN IT INTO POSITION AND GENTLY PRESS INTO PLACE.
8. REPLACE THE "U" SHAPED COIN REJECT/RETURN HOLDER REMOVED IN STEP 5.
9. REVERSE STEPS 4 through 1.

O. TO REPLACE COIN ACCEPTOR

1. DISCONTINUE POWER TO THE DRYER.
2. REMOVE THE LINT DRAWER and THE CONTROL DOOR FROM THE DRYER (follow Lint Drawer and Control/Lint Door removal procedures in SECTION A and SECTION B on page 3).
3. REMOVE SCREW LOCATED IN THE BOTTOM RIGHT HAND CORNER OF THE CONTROL PANEL.
4. DISCONNECT THE OPTIC SWITCH CONNECTOR(S) FROM THE JUMPER CONNECTOR(S). THIS IS DONE BY SQUEEZING THE OPTIC SWITCH CONNECTOR TABS AND PULLING APART.
5. REMOVE THE TWO (2) NUTS HOLDING THE "U" SHAPED COIN REJECT/RETURN HOLDER BY USING A 1/4" NUT DRIVER.
6. REMOVE THE TWO (2) NUTS LOCATED AT THE TOP OF THE COIN ACCEPTOR WITH THE SAME 1/4" NUT DRIVER. THE COIN ACCEPTOR CAN NOW BE REMOVED.
7. REVERSE PROCEDURE FOR INSTALLING THE NEW COIN ACCEPTOR.
8. REESTABLISH POWER TO THE DRYER.

P. TO REPLACE EITHER SOLID STATE RELAY BOARD

1. DISCONTINUE POWER TO THE DRYER.
2. REMOVE THE LINT DRAWER and THE CONTROL DOOR FROM THE DRYER (follow Lint Drawer and Control/Lint Door removal procedures in **SECTION A** and **SECTION B** on **page 3**).
3. REMOVE SCREW LOCATED IN THE BOTTOM RIGHT HAND CORNER OF THE CONTROL PANEL and OPEN CONTROL PANEL.
4. THE RELAY BOARD CAN BE REMOVED WITH THE CONTROL BOX IN PLACE ON THE DRYER, OR THE CONTROL BOX CAN BE REMOVED FROM THE DRYER AND PLACED ON A FLAT SURFACE. TO REMOVE THE CONTROL BOX, FOLLOW CONTROL BOX REMOVAL PROCEDURE IN **SECTION D** on **page 5**.
5. DISCONNECT THE WHITE 4-PIN CONNECTOR FROM THE RELAY BOARD.
6. REMOVE THE RELAY BOARD FROM THE FOUR (4) NYLON STANDOFFS BY PUSHING IN THE TAB ON THE SIDE OF THE NYLON STANDOFF AND PICKING UP THAT CORNER OF THE BOARD. DO THIS TO THE REMAINING THREE (3) STANDOFFS.
7. TO INSTALL THE RELAY BOARD, LINE UP THE RELAY BOARD WITH THE FOUR (4) NYLON STANDOFFS MAKING SURE THAT THE CONNECTOR ON THE BOARD IS TOWARDS THE BOTTOM OF THE CONTROL BOX, THEN PUSH THE BOARD ONTO THE NYLON STANDOFFS AND RECONNECT THE WHITE 4-PIN CONNECTOR.

NOTE: BE SURE THE FUSE HAS BEEN INSTALLED ON THE REPLACEMENT RELAY BOARD.

8. REVERSE STEPS 4 through 1.

Q. BASKET (Tumbler) ALIGNMENT - VERTICAL

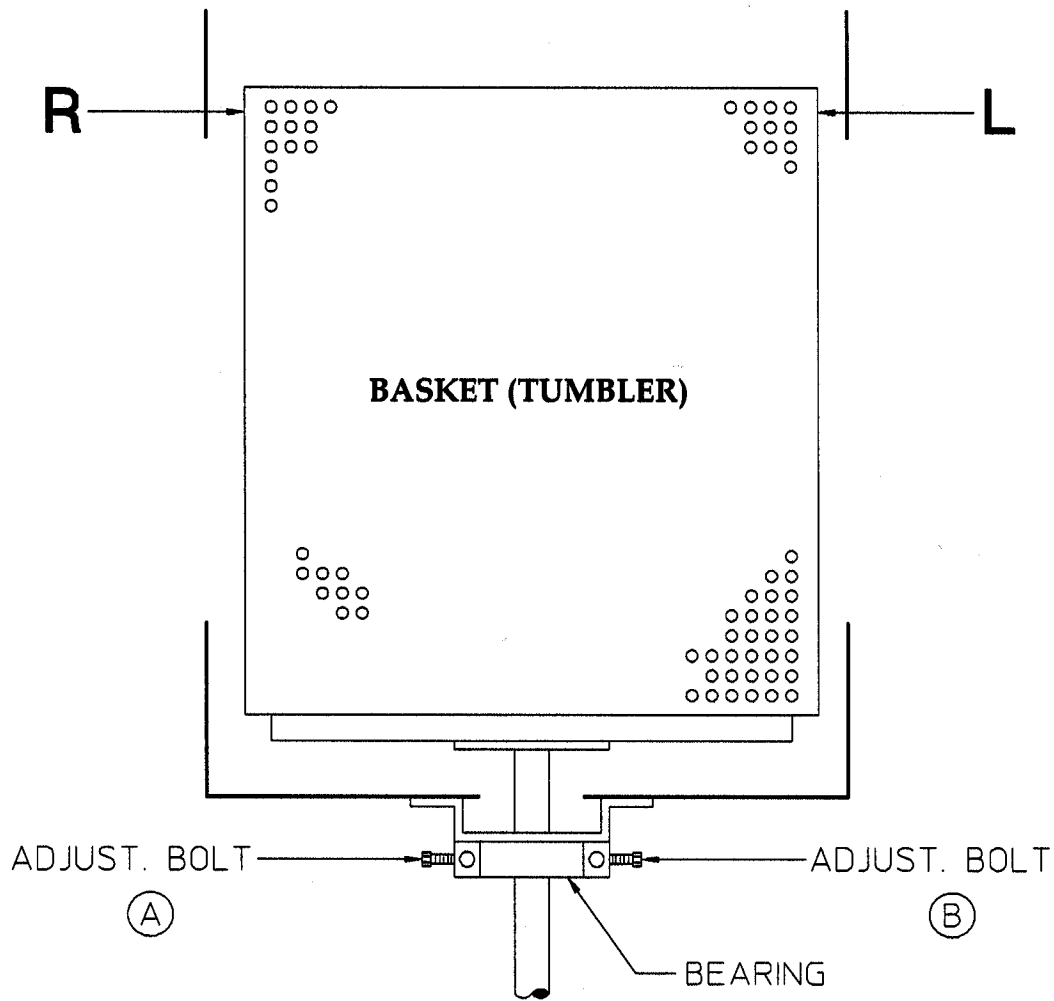
1. DISCONTINUE POWER TO THE DRYER.
2. REMOVE THE UPPER HALF OF THE REAR SPLIT BACK GUARD PANEL TO EITHER THE TOP OR THE BOTTOM BASKET (tumbler), DEPENDING ON WHICH BASKET (tumbler) IS BEING SERVICED.
3. LOOSEN THE FOUR (4) HEX HEAD BOLTS ON THE SIDES OF THE BEARING BOX (two [2] on each side).
4. BACK OFF JAM NUTS ON THE TWO (2) ALLEN HEAD ADJUSTMENT SCREWS.
5. TURN THE SCREWS CLOCKWISE EVENLY TO RAISE THE BASKET (tumbler) OR COUNTERCLOCKWISE EVENLY TO LOWER THE BASKET (tumbler).
6. ROTATE THE BASKET (tumbler) FROM THE FRONT AND CHECK ALIGNMENT WITH THE MAIN DOOR OPENING.

IMPORTANT: LEAVE A LARGER GAP FROM THE INSIDE RING ON THE TOP OF THE FRONT PANEL OPENING TO THE BASKET (tumbler), AND A SMALLER GAP ON THE BOTTOM TO COMPENSATE FOR THE WEIGHT OF THE CLOTHES BEING DRIED.

7. TIGHTEN THE FOUR (4) HEX HEAD BOLTS ON THE SIDES OF THE BEARING BOX, AND THE TWO (2) JAM (hex) NUTS ON THE ALLEN HEAD ADJUSTMENT SCREWS.
8. CHECK BELT TENSION AND MAKE THE NECESSARY ADJUSTMENTS (follow Belt/Idler Tension Adjustment procedure in **SECTION K** on **page 16**).
9. REINSTALL THE UPPER HALF OF THE REAR SPLIT BACK GUARD PANEL REMOVED IN **STEP 2**.
10. REESTABLISH POWER TO THE DRYER.

R. BASKET (Tumbler) ALIGNMENT - LATERAL

1. DISCONTINUE POWER TO THE DRYER.
2. REMOVE THE UPPER HALF OF THE REAR SPLIT BACK GUARD PANEL TO EITHER THE TOP OR THE BOTTOM BASKET (tumbler), DEPENDING ON WHICH BASKET(tumbler) IS BEING SERVICED.
3. LOOSEN THE TWO (2) HEX HEAD BOLTS (one [1] turn is enough) THAT HOLD THE PILLOW BLOCK BEARING TO THE BEARING BOX.
4. BACK OFF THE TWO (2) JAM (hex) NUTS ON THE SIDE ADJUSTMENT BOLTS BOLTS. ROTATE THE BASKET (tumbler) FROM THE FRONT OF THE DRYER, CHECKING THE SPACE BETWEEN THE BASKET (tumbler) AND THE FRONT PANEL. DOOR OPENING SHOULD B EQUAL ON EACH SIDE.
5. THE LATERAL ADJUSTMENT...(see illustration on facing page)
 - A. TO INCREASE GAP R, LOOSEN (turn **counterclockwise**) ADJUSTMENT BOLT A AND TIGHTEN (turn **clockwise**) ADJUSTMENT BOLT B.
 - B. TO DECREASE GAP R, LOOSEN (turn **counterclockwise**) ADJUSTMENT BOLT B AND TIGHTEN (turn **clockwise**) ADJUSTMENT BOLT A.
 - C. TO INCREASE GAP L, LOOSEN (turn **counterclockwise**) ADJUSTMENT BOLT B AND TIGHTEN (turn **clockwise**) ADJUSTMENT BOLT A.
 - D. TO DECREASE GAP L, LOOSEN (turn **counterclockwise**) ADJUSTMENT BOLT A AND TIGHTEN (turn **clockwise**) ADJUSTMENT BOLT B.



REAR OF DRYER

MAN0699

6. **TIGHTEN** and **SECURE** BOTH ADJUSTMENT BOLTS AND JAM (hex) NUTS.
7. **TIGHTEN** BEARING BOLTS LOOSENED IN **STEP 3**.
8. **CHECK** BELT TENSION and **MAKE** THE NECESSARY ADJUSTMENTS (follow Belt/Idler Tension Adjustment procedure in **SECTION K** on **page 16**).
9. **REINSTALL** THE UPPER HALF OF THE REAR SPLIT BACK GUARD PANEL REMOVED IN **STEP 2**.
10. **REESTABLISH** POWER TO THE DRYER.

S. TO REPLACE BASKET (Tumbler) AND/OR BASKET (Tumbler) SUPPORT

1. DISCONTINUE POWER TO DRYER.
2. REMOVE THE LINT DRAWER and THE CONTROL/LINT DOOR FROM THE DRYER (follow Lint Drawer and Control/Lint Door removal procedures in SECTION A and SECTION B on page 3).
3. IF LOWER BASKET (tumbler) IS BEING SERVICED, PROCEED TO STEP 4... REMOVE THE SCREW LOCATED AT BOTTOM RIGHT HAND CORNER OF THE CONTROL PANEL. SLIDE THE CONTROL BOX OUT 3/4's OF THE WAY AND DISCONNECT THE THREE (3) WIRE HARNESS CONNECTORS LOCATED AT THE BACK OF THE CONTROL BOX, THEN REMOVE CONTROL BOX FROM THE DRYER.
4. REMOVE FRONT PANEL FROM THE BASKET (tumbler) BEING SERVICED (follow Front Panel removal procedure in SECTION E on page 6).
5. REMOVE BELT FROM DRYER (follow Belt removal procedure in SECTION H on page 9 and page 10).
6. REMOVE BOTH (upper and lower) HALVES OF THE REAR SPLIT BACK GUARD PANELS TO EITHER THE TOP OR THE BOTTOM BASKET (tumbler), DEPENDING ON WHICH BASKET IS BEING SERVICED.
7. LOOSEN THE TWO (2) SET SCREWS ON THE PILLOW BLOCK BEARING AND FLANGE BEARING. (The two [2] set screws on the flange bearing can be reached through the opening at the bottom of the bearing box.)
8. REMOVE THE BASKET (tumbler) AND SUPPORT ASSEMBLY FROM THE FRONT OF THE DRYER. IF THE BASKET (tumbler) CANNOT BE REMOVED FREELY, CLEAN SHAFT AREA (with emery cloth) AND SPRAY WITH WD-40 OR A SIMILAR LUBRICANT. THEN, WITH A BLOCK OF WOOD AGAINST THE SHAFT END, STRIKE THE BLOCK OF WOOD WITH A HAMMER OR MALLET TO MOVE SHAFT PAST ANY BURRS MADE BY THE SET SCREWS.

IMPORTANT: NEVER STRIKE THE SHAFT DIRECTLY WITH A HAMMER.

9. IF ENTIRE BASKET (tumbler) AND SUPPORT ASSEMBLY IS BEING REPLACED, PROCEED TO STEP 11...
10. REMOVAL OF SUPPORT FROM THE BASKET (tumbler):
 - A. REMOVE THE SOCKET SET SCREW AT CENTER OF INSIDE BASKET (tumbler) BACK WALL.
 - B. LOOSEN and REMOVE THE THREE (3) SETS OF NUTS and WASHERS FROM THE BASKET (tumbler) TIE RODS, THEN REMOVE THE THREE (3) TIE RODS.
 - C. REASSEMBLE SUPPORT TO BASKET (tumbler) REVERSING THE PROCEDURE.
11. REASSEMBLE THE BASKET (tumbler) AND SUPPORT ASSEMBLY INTO THE DRYER BY REVERSING STEP 8 AND STEP 7.
12. REINSTALL BELT REMOVED IN STEP 5.
13. REINSTALL THE FRONT PANEL REMOVED IN STEP 4.
14. MAKE THE NECESSARY VERTICAL ALIGNMENT and LATERAL ALIGNMENT ADJUSTMENTS (follow Basket [tumbler] Vertical Alignment and Basket [tumbler] Lateral Alignment procedures in SECTION Q and SECTION R on page 22 through page 24).
15. REINSTALL BOTH (upper and lower) HALVES OF THE REAR SPLIT BACK GUARD PANELS REMOVED IN STEP 6.
16. MAKE THE NECESSARY BELT/IDLER ADJUSTMENT (follow Belt/Idler Tension Adjustment procedure in SECTION K on page 16).
17. REVERSE STEPS 3 through 1.

T. TO REPLACE BASKET (Tumbler) SUPPORT PILLOW BLOCK BEARING

1. DISCONTINUE POWER TO THE DRYER.
2. REMOVE THE UPPER HALF OF THE REAR SPLIT BACK GUARD PANEL TO EITHER THE TOP OR THE BOTTOM BASKET (tumbler), DEPENDING ON WHICH BASKET (tumbler) IS BEING SERVICED.
3. LOOSEN PILLOW BLOCK BEARING ADJUSTMENT JAM (hex) NUTS AND BOLTS (one [1] on each side of bearing support).
4. LOOSEN THE TWO (2) BEARING SET SCREWS.
5. REMOVE THE TWO (2) SETS OF NUTS, WASHERS, AND BOLTS SECURING THE BEARING TO THE BEARING BOX SUPPORT, THEN REMOVE THE BEARING.
6. REINSTALL BEARING and HARDWARE BY REVERSING STEPS 5 through 3.
7. MAKE THE NECESSARY VERTICAL ALIGNMENT and LATERAL ALIGNMENT ADJUSTMENTS (follow Basket [tumbler] Vertical Alignment and Basket [tumbler] Lateral Alignment procedures in SECTION Q and SECTION R on page 22 through page 24).

| IMPORTANT: MAKE SURE PROPER BELT ADJUSTMENT IS MADE.

8. REINSTALL THE UPPER HALF OF THE REAR SPLIT BACK GUARD PANEL REMOVED IN STEP 2.
9. REESTABLISH POWER TO THE DRYER.

U. TO REPLACE BASKET (Tumbler) SUPPORT FLANGE BEARING

1. DISCONTINUE POWER TO DRYER.
2. REMOVE THE LINT DRAWER and THE CONTROL/LINT DOOR (follow Lint Drawer and Control/Lint Door removal procedures in **SECTION A** and **SECTION B** on **page 3**).
3. IF THE LOWER BASKET (tumbler) IS BEING SERVICED, PROCEED TO **STEP 4**... REMOVE THE SCREW LOCATED AT THE BOTTOM RIGHT HAND CORNER OF THE CONTROL PANEL. SLIDE THE CONTROL BOX OUT 3/4'S OF THE WAY AND DISCONNECT THE THREE (3) WIRE HARNESS CONNECTORS LOCATED AT THE BACK OF THE CONTROL BOX. THEN REMOVE THE CONTROL BOX FROM THE DRYER.
4. REMOVE FRONT PANEL FROM THE BASKET (tumbler) BEING SERVICED (follow Front Panel removal procedure in **SECTION E** on **page 6**).
5. REMOVE BELT FROM DRYER (follow Belt removal procedure in **SECTION H** on **page 9** and **page 10**).
6. REMOVE THE UPPER HALF OF THE REAR SPLIT BACK GUARD PANEL TO EITHER THE TOP OR THE BOTTOM BASKET (tumbler), DEPENDING ON WHICH BASKET (tumbler) IS BEING SERVICED.
7. LOOSEN THE TWO (2) SET SCREWS ON THE PILLOW BLOCK BEARING AND FLANGE BEARING. THE TWO (2) SET SCREWS ON THE FLANGE BEARING CAN BE REACHED THROUGH THE OPENING AT THE BOTTOM OF THE BEARING BOX.
8. REMOVE THE BASKET (tumbler) AND SUPPORT ASSEMBLY FROM THE FRONT OF THE DRYER. IF THE BASKET (tumbler) CANNOT BE REMOVED FREELY, CLEAN SHAFT AREA (with emery cloth) AND SPRAY WITH WAD-40 OR A SIMILAR LUBRICANT. WITH A BLOCK OF WOOD AGAINST THE SHAFT END, STRIKE THE BLOCK OF WOOD WITH A HAMMER OR MALLET TO MOVE MALLET TO MOVE SHAFT PAST ANY BURRS MADE BY THE SET SCREWS.

IMPORTANT: NEVER STRIKE THE SHAFT DIRECTLY WITH A HAMMER.

9. LOOSEN THE PILLOW BLOCK BEARING ADJUSTMENT JAM (hex) NUTS and BACK OFF ADJUSTMENT BOLTS. (One [1] is located on each side of the bearing support.)
10. REMOVE FOUR (4) SETS OF NUTS, WASHERS, and BOLTS SECURING THE BEARING BOX ASSEMBLY TO THE DRYER. THEN, REMOVE THE BEARING BOX ASSEMBLY.
11. REMOVE THE FOUR (4) NUTS SECURING THE FLANGE BEARING TO THE DRYER, THEN REMOVE THE BEARING FROM DRYER. REVERSE PROCEDURE FOR INSTALLING NEW BEARING.
12. REASSEMBLE BASKET (tumbler)/SUPPORT ASSEMBLY INTO THE DRYER.
13. REASSEMBLE BEARING BOX ASSEMBLY TO DRYER BY REVERSING STEP 10 AND STEP 9.
14. RECONNECT BELT TO IDLER/MOTOR REMOVED IN STEP 5.
15. CHECK BELT TENSION and MAKE THE NECESSARY ADJUSTMENTS (follow Belt/Idler Tension Adjustment procedure in SECTION K on **page 16**).
16. MAKE THE NECESSARY VERTICAL ALIGNMENT and LATERAL ALIGNMENT ADJUSTMENTS (follow Basket [tumbler] Vertical Alignment and Basket [tumbler] Lateral Alignment procedures in SECTION Q and SECTION R on **page 22 through page 24**).
17. REINSTALL THE FRONT PANEL REMOVED IN STEP 4.

NOTE: IF BASKET (tumbler) IS RUBBING AGAINST THE FRONT PANEL, REPEAT STEP 7 AND REPOSITION BASKET (tumbler).

18. REINSTALL THE UPPER HALF OF THE REAR SPLIT BACK GUARD PANEL REMOVED IN STEP 6.
19. REVERSE STEPS 3 through 1.

V. TO REPLACE 330° (Burner) HI-LIMIT SWITCH (Thermostat)

NOTE: THE 330° (burner) HI-LIMIT SWITCH (thermostat) IS LOCATED ON THE BURNER BOX CHAMBER AT THE REAR OF DRYER.

1. DISCONTINUE POWER TO THE DRYER.
2. REMOVE THE LOWER HALF OF THE SPLIT BACK GUARD PANEL TO EITHER THE TOP OR THE BOTTOM BASKET (tumbler), DEPENDING ON WHICH BASKET (tumbler) IS BEING SERVICED.
3. DISCONNECT WIRING TO THE 330° HI-LIMIT SWITCH (thermostat).
4. DISASSEMBLE HI-LIMIT FROM BURNER CHAMBER BY REMOVING THE TWO (2) SHEET METAL SCREWS SECURING HI-LIMIT TO THE BURNER BOX CHAMBER.
5. REVERSE PROCEDURE FOR INSTALLING NEW 330° (burner) HI-LIMIT SWITCH (thermostat).
6. REESTABLISH POWER TO THE DRYER.

W. TO REPLACE SAIL SWITCH

NOTE: THE SAIL SWITCH/DAMPER IS LOCATED IN THE AREA ABOVE THE GAS VALVE OF THE GAS VALVE TRAIN ASSEMBLY.

1. DISCONTINUE POWER TO THE DRYER.
2. REMOVE LINT THE DRAWER and THE CONTROL /LINT DOOR (follow Lint Drawer and Control/Lint Door removal procedures in SECTION A and SECTION B on page 3).
3. REMOVE SAIL SWITCH/DAMPER ROD ASSEMBLY FROM THE DRYER.
4. DISASSEMBLE SAIL SWITCH BRACKET ASSEMBLY FROM THE DRYER BY REMOVING THE TWO (2) PHILLIPS HEAD SCREWS LOCATED IN THE LINT DRAWER AREA.
5. DISASSEMBLE SAIL SWITCH FROM MOUNTING BRACKET BY LOOSENING and REMOVING THE TWO (2) SLOTTED HEAD MACHINE SCREWS SECURING THE SAIL SWITCH TO THE SAIL SWITCH BRACKET.

NOTE: WHEN DISASSEMBLING THE SAIL SWITCH FROM THE BRACKET, HOLD ON TO THE TWIN SPEED NUT LOCATED AT THE BACK SIDE OF THE SAIL SWITCH BRACKET INTO WHICH THE SCREWS ARE THREADED.

6. DISCONNECT THE TWO (2) WIRES FROM THE SAIL SWITCH.
7. REVERSE STEPS 6 through 3 FOR INSTALLING NEW SAIL SWITCH.
8. ADJUST THE SAIL SWITCH BY BENDING THE ACTUATOR ARM OF THE SWITCH ITSELF SO THAT WHEN THE SAIL SWITCH DAMPER IS MANUALLY CLOSED THE SAIL SWITCH ACTIVATES and THE WHEN DAMPER IS RELEASED THE SAIL SWITCH DEACTIVATES.
9. REVERSE STEP 2 and STEP 1.

X. TO REPLACE MAIN DOOR SWITCH(ES)

1. PLUNGER-TYPE DOOR SWITCH:

- A. DISCONTINUE POWER TO THE DRYER.
- B. OPEN THE MAIN DOOR COMPLETELY.
- C. REMOVE THE TWO SCREWS HOLDING THE DOOR SWITCH HOUSING TO DRYER FRONT PANEL.
- D. DISCONNECT THE MAIN DOOR SWITCH WIRES FROM SWITCH (two [2] yellow and two [2] gray).
- E. WITH DOOR SWITCH HOUSING DISASSEMBLED FROM THE DRYER, REMOVE THE NUT SECURING THE DOOR SWITCH TO THE HOUSING and DISASSEMBLE SWITCH (including spacer/washer) FROM THE HOUSING ASSEMBLY.
- F. ASSEMBLE NEW DOOR SWITCH TO HOUSING WITH THE SPACER/WASHER BETWEEN SWITCH and INSIDE OF THE HOUSING.
- G. RECONNECT THE DOOR SWITCH WIRES DISCONNECTED IN STEP 4. WIRE TERMINALS ARE KEYED IN SIZE SO THEY CANNOT BE CONNECTED TO THE WRONG TERMINALS.
- H. REASSEMBLE DOOR SWITCH HOUSING TO DRYER WITH THE SCREWS REMOVED IN STEP 3.

IMPORTANT: WHEN REINSTALLING THE DOOR SWITCH HOUSING TO THE DRYER, BE SURE THE INTERNAL WIRES DO not GET PINCHED BETWEEN THE DOOR SWITCH HOUSING AND THE FRONT PANEL.

- I. REESTABLISH POWER TO THE DRYER.

2. SERIES (Lever Actuator) TYPE DOOR SWITCH:

- A. DISCONTINUE POWER TO THE DRYER.
- B. OPEN MAIN DOOR COMPLETELY.
- C. REMOVE THE TWO SCREWS HOLDING THE DOOR SWITCH HOUSING TO THE FRONT PANEL (upon doing this the actuator will come off also).

D. DISCONNECT THE MAIN DOOR SWITCH WIRES.

IMPORTANT: IDENTIFY LOCATION OF WIRES FOR CORRECT REINSTALLATION.

E. WITH DOOR SWITCH HOUSING DISASSEMBLED FROM THE DRYER, REMOVE THE TWO (2) SETS OF NUTS, LOCK WASHERS, AND SCREWS SECURING THE DOOR SWITCHES TO THE HOUSING.

F. ASSEMBLE NEW DOOR SWITCHES INTO THE HOUSING WITH THE HARDWARE REMOVED IN STEP E.

G. RECONNECT THE DOOR SWITCH WIRES DISCONNECTED IN STEP D.

H. REASSEMBLE DOOR SWITCH HOUSING TO DRYER WITH THE SCREW REMOVED IN STEP C.

IMPORTANT: WHEN REINSTALLING THE DOOR SWITCH HOUSING TO THE DRYER, BE SURE THE INTERNAL WIRES DO NOT GET PINCHED BETWEEN THE DOOR SWITCH HOUSING AND THE FRONT PANEL.

I. REESTABLISH POWER TO THE DRYER.

Y. TO REPLACE DIRECT SPARK IGNITION (DSI) MODULE

1. DISCONTINUE POWER TO THE DRYER.
2. REMOVE THE LINT DRAWER, THE CONTROL/LINT DOOR, and THE GAS VALVE TRAIN ASSEMBLY FROM DRYER (follow Gas Valve Train removal procedure in **SECTION C** on **page 4**).

3. DISASSEMBLE DSI MODULE/BRACKET ASSEMBLY FROM THE GAS VALVE TRAIN SLIDE BY REMOVING THE TWO (2) SETS OF NUTS AND WASHERS SECURING THE BRACKET TO THE GAS VALVE TRAIN.
4. DISCONNECT ALL WIRING TO THE DSI MODULE INCLUDING THE ORANGE HIGH VOLTAGE (HV) LEAD.

IMPORTANT: IDENTIFY LOCATION OF EACH WIRE FOR CORRECT REINSTALLATION.

5. DISASSEMBLE DSI MODULE FROM THE BRACKET BY REMOVING THE FOUR (4) SETS OF NUTS AND WASHERS SECURING THE DSI MODULE TO THE BRACKET.
6. REVERSE STEPS 5 through 3 FOR INSTALLING THE NEW DSI MODULE.

IMPORTANT: BE SURE WIRES REMOVED IN STEP 4 ARE CONNECTED TO THE CORRECT TERMINAL POSITIONS. WHEN CONNECTING THE ORANGE HIGH VOLTAGE (HV) LEAD TO THE DSI MODULE, BE SURE IT IS SECURELY IN PLACE.

7. REINSTALL THE GAS VALVE TRAIN, THE CONTROL/LINT DOOR, and THE LINT DRAW REMOVED IN STEP 2.
8. REESTABLISH POWER TO THE DRYER.

Z. TO REPLACE IGNITOR/PROBE ASSEMBLY

1. DISCONTINUE POWER TO THE DRYER.

2. REMOVE THE LINT DRAWER, THE CONTROL/LINT DOOR and THE GAS VALVE TRAIN ASSEMBLY FROM DRYER (follow Gas Valve Train Removal procedure in **SECTION C** on page 4).
3. DISCONNECT WIRING FROM THE DSI IGNITOR/PROBE ASSEMBLY.
4. DISASSEMBLE DSI IGNITOR/PROBE ASSEMBLY FROM BRACKET BY REMOVING THE TWO (2) SETS OF NUTS, WASHERS, and SCREWS SECURING THE IGNITOR/PROBE ASSEMBLY TO BRACKET.
5. REVERSE STEP 4 AND STEP 3 FOR INSTALLING THE NEW IGNITOR/PROBE ASSEMBLY.

IMPORTANT: BEFORE INSTALLING THE IGNITOR/PROBE ASSEMBLY, CHECK THE GAP BETWEEN THE IGNITOR ELECTRODE AND THE GROUND ROD TO INSURE THAT THE GAP IS SET AT 1/8". IF ADJUSTMENT IS NECESSARY, BEND THE GROUND ROD TO ACHIEVE THE CORRECT GAP.

6. REINSTALL THE GAS VALVE TRAIN ASSEMBLY, THE CONTROL/LINT DOOR, and THE LINT DRAWER REMOVED IN STEP 2.
7. REESTABLISH POWER TO THE DRYER.

AA. TO REPLACE GAS VALVE

1. DISCONTINUE POWER TO THE DRYER.
2. CLOSE ALL GAS SHUT-OFF VALVES IN GAS SUPPLY LINE TO THE DRYER.
3. REMOVE THE LINT DRAWER, THE CONTROL/LINT DOOR, and THE GAS VALVE TRAIN ASSEMBLY FROM DRYER (follow Gas Valve Train removal procedure in **SECTION C** on page 4).

4. DISCONNECT THE TWO (2) WIRES FROM THE GAS VALVE.
5. DISCONNECT PRESSURE TEST LINE (1/4" aluminum tubing) AT THE FERRULE NUT CONNECTED TO THE BRASS ELBOW AT THE GAS VALVE PRESSURE TAP.
6. REMOVE THE GAS VALVE/MANIFOLD ASSEMBLY FROM THE GAS VALVE TRAIN SLIDE.
 - A. REMOVE THE TWO (2) SHEET METAL SCREWS FROM BOTTOM SIDE OF THE GAS VALVE TRAIN SLIDE WHICH SECURE THE BRACKETS AT THE INLET SIDE OF THE GAS VALVE.
 - B. REMOVE THE TWO (2) SETS OF NUTS and WASHERS SECURING THE MANIFOLD BRACKET TO THE GAS VALVE TRAIN SLIDE AND DISASSEMBLE VALVE/MANIFOLD ASSEMBLY FROM SLIDE.
7. REMOVE 1/2" STREET ELBOW FROM INLET SIDE OF GAS VALVE.
8. REMOVE MANIFOLD FROM GAS VALVE.
9. REMOVE PRESSURE TEST LINE (brass) ELBOW FROM THE GAS VALVE PRESSURE TAP.
10. REVERSE STEPS 9 through 7 FOR INSTALLING THE NEW GAS VALVE.

IMPORTANT: WHEN USING PIPE DOPE FOR GAS CONNECTIONS...ONLY PIPE DOPE SUITABLE FOR BOTH NATURAL GAS and L.P. GAS APPLICATIONS IS TO BE USED!!!

NOTE: THE NEW GAS VALVE IS SUPPLIED WITH A PLUG AT THE PRESSURE TAP. REMOVE THIS PLUG and REPLACE IT WITH THE BRASS ELBOW REMOVED IN STEP 9.

11. REASSEMBLE THE GAS VALVE/MANIFOLD ASSEMBLY TO THE GAS VALVE TRAIN SLIDE BY REVERSING STEP 6.

NOTE: WHEN MAKING WIRING CONNECTIONS, BE SURE THE JUMPER WIRE IS IN PLACE AT GAS VALVE TERMINALS 1 and TERMINAL 3.

12. RECONNECT ALL PLUMBING AND WIRING CONNECTIONS REMOVED/DISCONNECTED IN STEP 5 and STEP 4.
13. REINSTALL THE GAS VALVE TRAIN ASSEMBLY INTO DRYER REMOVED IN STEP 3.

NOTE: BE SURE THE UNION SHUT-OFF VALVE AT THE INLET AREA OF THE GAS VALVE IS IN THE "ON" (open) POSITION.

14. REINSTALL THE CONTROL/LINT DOOR and THE LINT DRAWER REMOVED IN STEP 3.
15. OPEN ALL SHUT-OFF VALVES CLOSED IN STEP 2.
16. REESTABLISH POWER TO THE DRYER.

BB. TO CONVERT DRYER FROM NATURAL GAS TO LIQUID PROPANE (L.P.) GAS

1. DISCONTINUE POWER TO THE DRYER.
2. CLOSE ALL GAS SHUT-OFF VALVES IN THE GAS SUPPLY LINE TO DRYER.
3. REMOVE THE LINT DRAWER, THE CONTROL/LINT DOOR, and THE GAS VALVE TRAIN ASSEMBLY FROM DRYER (follow Gas Valve Train removal procedure in SECTION C on page 4).
4. WITH THE GAS VALVE TRAIN ASSEMBLY REMOVED FROM THE DRYER, REMOVE THE TWO (2) SETS OF NUTS and WASHERS SECURING THE MANIFOLD BRACKET TO THE GAS VALVE TRAIN SLIDE.

5. REMOVE THE TWO (2) SHEET METAL SCREWS FROM THE BOTTOM SIDE OF THE GAS VALVE TRAIN SLIDE WHICH SECURE THE BRACKETS AT THE INLET SIDE OF THE GAS VALVE.
6. PULL MANIFOLD/VALVE ASSEMBLY SLIGHTLY BACK SO THAT THE BURNER ORIFICE IS EXPOSED.
7. UNSCREW BURNER ORIFICE AND REPLACE WITH L.P. ORIFICE.

IMPORTANT: USE EXTREME CARE WHEN REMOVING AND REPLACING ORIFICE. THIS ORIFICE IS MADE OF BRASS AND IS EASILY DAMAGED.

NOTE: CONSULT FACTORY WHEN REPLACING ORIFICE FOR ELEVATIONS OVER 2,000 FEET.

8. REINSTALL THE VALVE/MANIFOLD ASSEMBLY BY REVERSING STEPS 6 through 4.
9. LOCATE VALVE REGULATOR ADJUSTMENT COVER. REMOVE COVER WITH SLOTTED SCREWDRIVER, INSTALL VALVE L.P. STEM/SPRING KIT, THEN REINSTALL COVER.
10. REINSTALL THE GAS VALVE TRAIN ASSEMBLY INTO DRYER REMOVED IN STEP 3.

NOTE: BE SURE THE UNION SHUT-OFF VALVE AT THE INLET AREA OF THE GAS VALVE IS IN THE "ON" (open) POSITION.

11. REINSTALL THE CONTROL/LINT DOOR and THE LINT DRAWER REMOVED IN STEP 3.
12. CONVERT OPPOSITE BASKET BY FOLLOWING **STEP 2 through STEP 11.**
13. ONCE THE CONVERSION OF BOTH BASKETS ARE COMPLETE, **OPEN ALL GAS SHUT-OFF VALVES CLOSED IN STEP 2.**

IMPORTANT: THE GAS VALVE PRESSURE REGULATORS ARE NOW
BLOCKED OPEN. GAS PRESSURE MUST NOW BE
REGULATED AT THE SOURCE (L.P. tank) OR A
REGULATOR MUST BE ADDED IN THE GAS SUPPLY LINE
OF EACH DRYER. A CONSISTENT WATER COLUMN (W.C.)
PRESSURE OF 10.5 TO 11 INCHES MUST BE PROVIDED.

14. REESTABLISH POWER TO THE DRYER.

CC. TO REPLACE COIN VAULT

1. DISCONTINUE POWER TO THE DRYER.
2. REMOVE BOTH (upper and lower) LINT DRAWERS AND THE CONTROL/LINT DOORS FROM THE DRYER (follow Lint Drawer and Control/Lint Door removal procedures in SECTION A and SECTION B on page 3).
3. REMOVE THE CONTROL BOX AND THE LOWER FRONT PANEL FROM THE DRYER (follow Front Panel removal procedure in SECTION E on page 6).
4. REMOVE THE COIN BOX.
5. FROM INSIDE OF COIN VAULT, LOOSEN and REMOVE THE FOUR (4) NUTS SECURING THE COIN VAULT TO DRYER INNER TOP, THEN REMOVE THE COIN VAULT FROM THE DRYER.
6. INSTALL THE NEW COIN VAULT BY REVERSING STEP 5. DO NOT TIGHTEN THE FOUR (4) NUTS. THEY MUST BE LEFT LOOSE AT THIS TIME FOR THE COIN VAULT ADJUSTMENT.
7. TIGHTEN THE FOUR (4) COIN VAULT HEX NUTS LEFT LOOSE IN STEP 6.
8. REINSTALL THE COIN BOX REMOVED IN STEP 4.

9. REINSTALL THE CONTROL BOX REMOVED IN STEP 3.
10. REINSTALL THE FRONT PANEL REMOVED IN STEP 3.
11. REINSTALL CONTROL/LINT DOORS AND LINT DRAWERS REMOVED IN STEP 2.
12. REESTABLISH POWER TO THE DRYER.

DD. TO REMOVE MAIN DOOR

1. OPEN MAIN DOOR COMPLETELY.
2. WHILE HOLDING THE DOOR IN PLACE, REMOVE THE FOUR (4) PHILLIPS HEAD SCREWS SECURING MAIN DOOR TO THE FRONT PANEL HINGE.
3. REINSTALL THE MAIN DOOR BY REVERSING PROCEDURE.

EE. TO INSTALL NEW MAIN DOOR GLASS

1. REMOVE THE MAIN DOOR ASSEMBLY FROM THE DRYER (follow Main Door removal procedure in SECTION DD above).
2. LAY MAIN DOOR ON FLAT SURFACE WITH FRONT OF DOOR FACE DOWN.
3. REMOVE GLASS and CLEAN ALL THE OLD SEALANT OFF OF MAIN DOOR.

**IMPORTANT : THIS AREA MUST BE COMPLETELY CLEANED FOR
CORRECT BONDING.**

4. APPLY A NARROW BEAD OF SILICONE (ADC P/N 170730) ALL AROUND THE MAIN DOOR AREA WHERE THE GLASS WILL REST.
5. INSTALL THE GLASS ONTO THE DOOR GLASS ADHESIVE and SLIGHTLY PRESS GLASS IN PLACE.

IMPORTANT: DO NOT PRESS HARD OR SILICONE THICKNESS BETWEEN THE GLASS AND THE DOOR WILL BE REDUCED RESULTING IN POOR BONDING.

6. THE DOOR ASSEMBLY SHOULD NOW BE PUT IN AN AREA WHERE IT WILL NOT BE DISTURBED FOR AT LEAST 24 HOURS. DEPENDING ON THE CONDITIONS, THE CURING TIME OF THIS ADHESIVE IS 24 TO 36 HOURS.
7. AFTER THE 24 to 36 HOUR CURING PERIOD, REINSTALL MAIN DOOR ON THE DRYER BY REVERSING STEP 1.

FF. TO REPLACE MAIN DOOR GASKET

1. OPEN MAIN DOOR COMPLETELY.
2. REMOVE ALL EXISTING MAIN DOOR GASKET MATERIAL WITH A PUTTY KNIFE OR SIMILAR DEVICE. MAKE SURE DOOR SURFACE IS AS CLEAN AS POSSIBLE.
3. APPLY A SMALL BEAD OF ADHESIVE (ADC P/N 170725) ALL AROUND THE MAIN DOOR GASKET CAVITY AREA.
4. GENTLY PUSH GASKET IN PLACE STARTING AT THE LEFT SIDE OF THE DOOR (near the main door switch).
5. DRYER SHOULD BE LEFT OUT OF OPERATION FOR AT LEAST 8 HOURS.

GG. TO REPLACE MAIN DOOR HINGE

1. DISCONTINUE POWER TO DRYER.
2. REMOVE THE LINT DRAWER, THE CONTROL/LINT DOOR, THE CONTROL BOX AND THE FRONT PANEL FROM THE DRYER (follow Control Box removal procedure **SECTION D** on **page 5**).

NOTE: BEFORE REMOVING THE FRONT PANEL FROM THE DRYER, REMOVE THE MAIN DOOR ASSEMBLY (follow Main Door removal procedure in **SECTION DD** on **page 40**).

3. REMOVE MAIN DOOR SWITCH HOUSING FROM THE FRONT PANEL (follow Main Door Switch replacement procedure in **SECTION X** on **page 31** through **page 33**).
4. DISASSEMBLE MAIN DOOR HINGE FROM THE FRONT PANEL BY REMOVING THE FOUR (4) NUTS SECURING HINGE TO BACK SIDE OF THE FRONT PANEL.
5. POSITION THE NEW HINGE SO THAT THE PART OF THE HINGE THAT THE MAIN DOOR IS SECURED TO IS TOWARDS THE FRONT PANEL MAIN DOOR OPENING.
6. INSTALL HINGE STUDS THROUGH THE FRONT PANEL HOLES AND SECURE IN PLACE WITH THE FOUR (4) NUTS REMOVED IN **STEP 4**.
7. REINSTALL MAIN DOOR SWITCH HOUSING REMOVED IN **STEP 3**.
8. REVERSE **STEP 2** and **STEP 1**.

ADC 450110 1--08/07/91-100 2-03/31/92-100 3-07/31/92-100
4--04/23/93-100 5-06/17/93-100 6-11/18/93-250
7*-07/01/94-250

